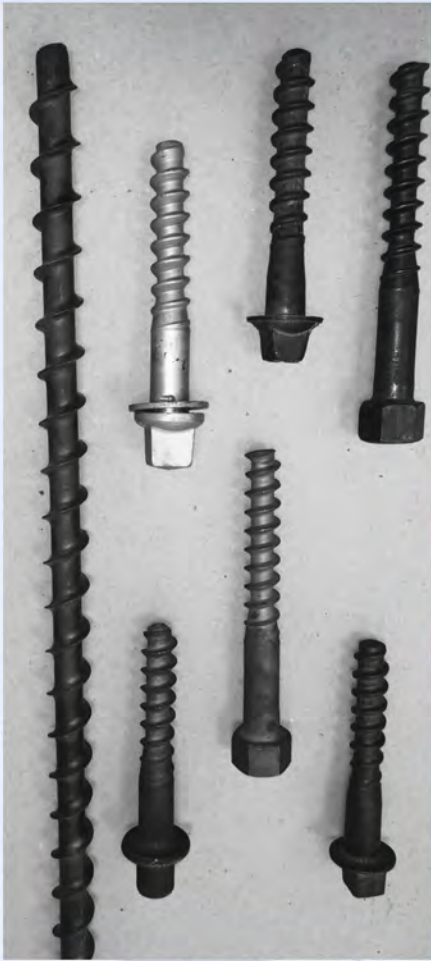


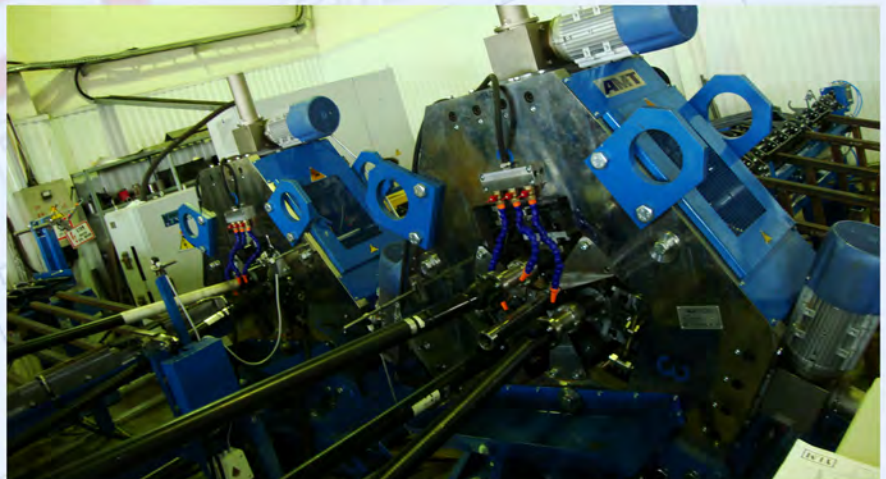
# SPECIAL SCREWS FOR RAILROAD AND MINING OPERATIONS



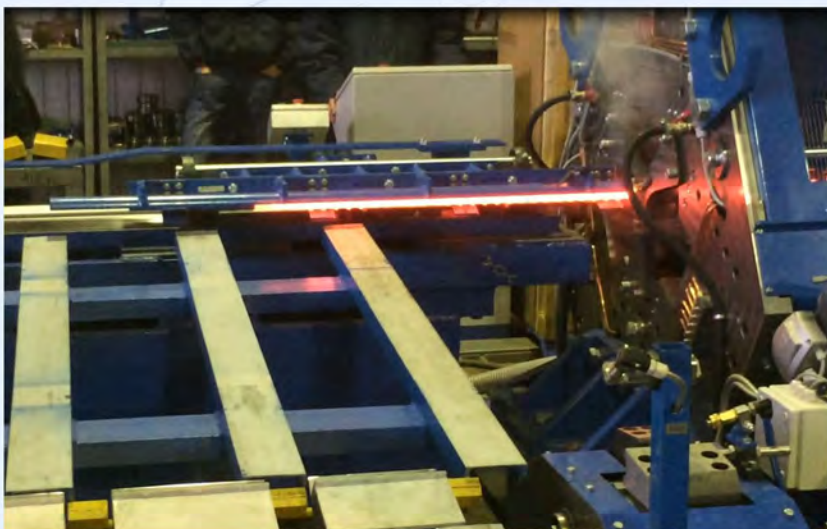
SCREWS - RAILROADS & MINES



CROSS WEDGE ROLLING LINE WRL3010



CROSS WEDGE ROLLING LINE HRL3020



CROSS WEDGE ROLLING LINE HRL3020

## THREAD ROLLING OPERATIONS:

Machines:  
WRL3009TS and HRL3020 series

Capacities:  
500-720 parts per hour

Advantages:  
Combining stamping and rolling operations reduces the cost of manufacturing by up to 50 - 60%





**ERS**  
Engineering Corp.

**AMT**  
ENGINEERING

**ERS Engineering Corp. is an exclusive representative of AMTengineering.**

AMTengineering specializes in design, engineering, and manufacturing of equipment for the metal-working industry.

Over the years of successful operation AMTengineering has assisted its customers in increasing profitability and discovering new business opportunities. AMT's main goal is to meet and exceed its customers' expectations and become the most advanced and respected metalworking equipment supplier worldwide. The AMTengineering's floor space, including its engineering center, is about 8000 square meters. At present, the company employs nearly 190 people (including 76 design engineers). Many years of research activities and design developments are reflected in the high quality of AMT's equipment. Since the company started operations in 1999, it has received 42 patents for various types of equipment and special tools.

The equipment manufactured by AMTengineering is successfully working at factories of some leading enterprises of the world: "DANAHER Tool Group", "Metaldyne" (USA), "American Axle & Manufacturing" (Mexico), "Severstal", "Gorky Automobile Plant", "Kama Automobile Plant", "Exergia", Vologda plant "Building Constructions and Road Machines", Samara Plant "Electroschit", "Novolipetsk Metallurgical Plant", "Dimitrovgradsky Plant of Light Steel Profiles", the Group of companies "Metal profile" (Russia), "Minsk Tractor Works", "Mogilev Plant of Elevator Engineering", "Belarusian Potash Company" (Belarus), Chernigov Plant "Avtodetal", "Vinnitsa Plant of Tractor Units", Dimitrovgradskiy Plant "Gidrosila" (Ukraine), and others.



MACHINE QRM6



MACHINE WRL4010



MACHINE WRL2512



MACHINE WRL6010



MACHINE WRL2506TS



MACHINE WRL2509



MACHINE WRL2512



MACHINE WRL6312



MACHINE WRL6312



MACHINE WRL2510



MACHINE WRL4010



MACHINE WRL9025TS



MACHINE WRL2509



MACHINE WRL2510



MACHINE WRL4010



MACHINE WRL10025TS